

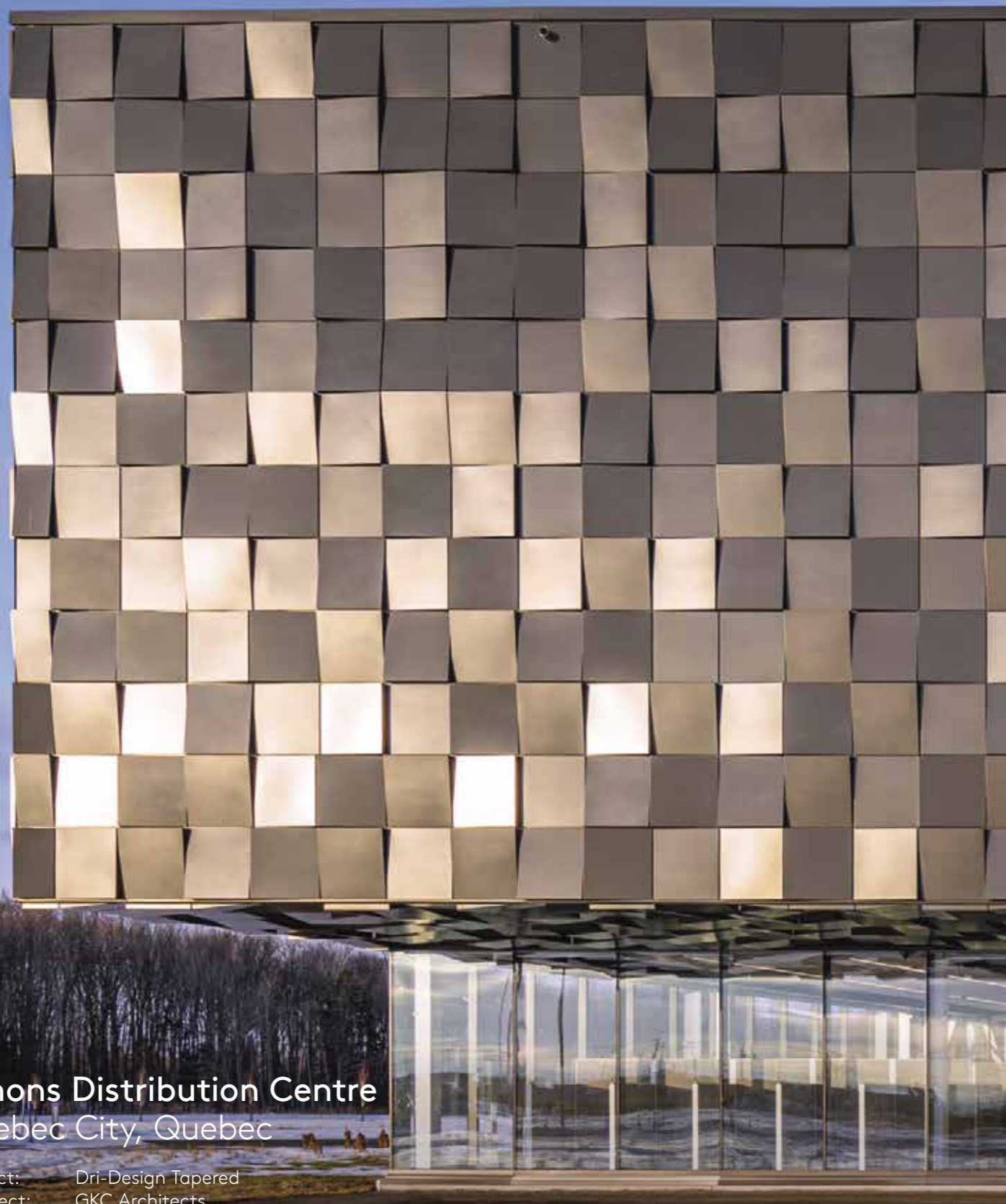
Façade Systems  
Australia

Protected by



# Product Portfolio Dri-Design





**Simons Distribution Centre**  
Quebec City, Quebec

Product: Dri-Design Tapered  
Architect: GKC Architects  
Photography: Stephan Poulin

# Contents

---

<b>What makes Dri-Design Unique?</b>	<b>4</b>
<b>Why choose Dri-Design?</b>	<b>6</b>
Design Freedom	8
Speed of Install	10
High Performance Façade Finishes	12
<b>Dri-Design Profiles</b>	<b>14</b>
Dri-Design Flat	15
Dri-Design Tapered	16
Dri-Design Shadow	19
Dri-Design Perforated	20
Sizes & Materials	23
<b>Dri-Design Substructures</b>	<b>24</b>
<b>Bespoke Façades</b>	<b>26</b>
<b>Services</b>	<b>28</b>
Recladding	28
Installer Training	28
CPDs	29
Specialist Fabrications	29
Samples	30
<b>Planet Passionate</b>	<b>31</b>



# What makes Dri-Design unique?

---

Dri-Design offers the ultimate design flexibility for exterior and interior applications.

## **True Dry Joints**

One of the many secrets of Dri-Design's success is its interlocking system used to fasten the panels to the structure. This patented system also functions as a superior method of water management. This unique technology ensures the cassettes perform flawlessly in the long term, without the delaminating, streaking or staining associated with silicone sealants and gaskets.

## **Unheard of Efficiency**

Kingspan Façade Systems utilizes the latest automation technologies to streamline the manufacturing process; each cassette is produced in a matter of seconds.

## **Speed of Install**

Unique patented joint system simplifies the installation process, allowing for install twice as fast as comparable systems.

## **Deemed to be Non-Combustible**

Dri-Design is deemed to be non-combustible in accordance with National Construction Code clause C1.9(e) and complies with Australian Standards AS 1530.3 and AS 1530.1. It can also be supplied as part of a large scale AS 5113 tested facade system.

## **Solid Metal Cassette**

Solid metal cassette - not an Aluminium Composite Panel (ACP).

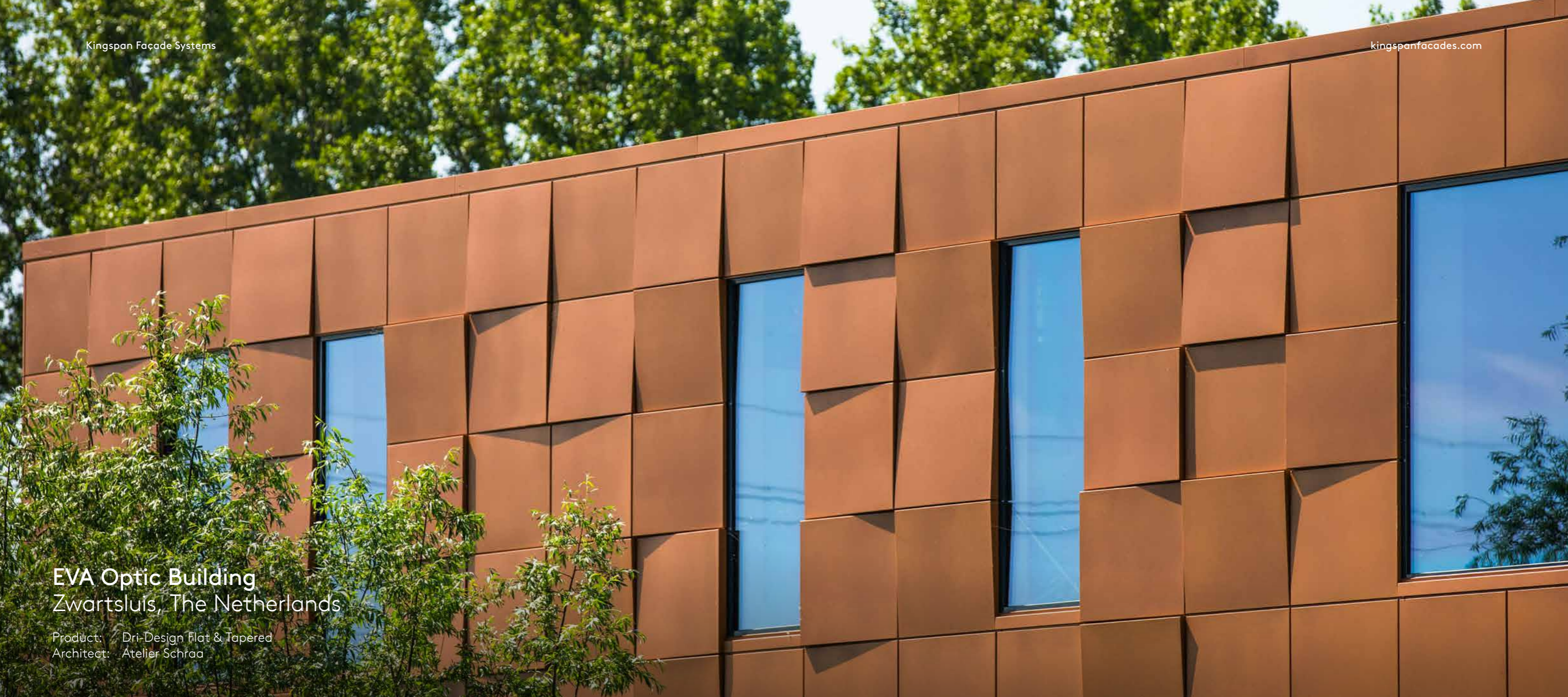
## **Superior Sustainability**

Solid aluminium is 100% recyclable.

**Skyway Library**  
Seattle, USA

Product: Dri-Design Flat  
Architect: Weinstein AU Architects





## EVA Optic Building Zwartsluis, The Netherlands

Product: Dri-Design Flat & Tapered  
Architect: Atelier Schraa

## Why choose Dri-Design?

---

Where one of our insulated panels are adopted as part of the Dri-Design build up, a 25 year 'through wall' structural and thermal performance warranty is provided as part of the system.



Manufactured in Australia



Superior airtightness and thermal performance when full system is used



Up to 25 Year Product Warranty



Design freedom with a choice of three profiles



Design Support Provided



Wide range of colour choices



# Design Freedom

Dri-Design Flat can be used on its own or easily interchanged with the other Dri-Design profiles.

Introducing a Tapered or Shadow profile variation to your design gives depth and texture whilst the fixing system remains the same.



Flat 32mm depth



Tapered maximum 75mm depth



Shadow maximum 100mm depth

Complementary flashing, gutters and accessories can also be manufactured in the same colour as the cassettes, creating a seamless finish.

Ease of installation allows enormous possibilities in terms of patterns as cassettes are easily interchangeable without the need for complicated rail and bracket systems.



Stack Lay



Vertical Stack Lay



Horizontal Staggered Lay



Vertical Staggered Lay

# Speed of Install

---

Dri-Design takes less than half the time of comparable systems to install due to the minimal components, simple fixing system and ease of handling. When used with Karrier Panel or Eurobond Rainspan panels, Dri-Design offers even greater time saving advantages over any other system by removing time consuming tophat set out.

The face of the insulated panel acts as a structural substrate for the façade whilst simultaneously providing an air, thermal, and watertight barrier for the building.



First cassette hooks onto the J trim and is fixed to the Karrier Panel.



Subsequent cassette laps over neighbour at side and engages with cassette in course below.



**Millwood Library**  
Edmonton, Alberta, Canada

Product: Dri-Design Flat & Tapered  
Architect: Dub Architects & HCMA Architecture + Design



# High Performance Façade Finishes

---

When a design demands colour and tone, Kingspan has a vast palette of choice with their façade systems. Dri-Design can be finished with either Dulux or Interpon standard powder coat ranges, or to match any RAL colour of choice.

Additionally, we can also provide a range of coatings that can replicate more expensive metal options. We have numerous options from metallic and standard to pearlescent and textured.

Contact our samples department for colour swatches.

## Karrinyup Shopping Centre Perth, Australia

Product: Dri-Design Flat & Shadow  
Architect: Hames Sharley & Taylor Robinson Chaney Broderick  
Photography: David Broadway



## Chinguacousy Park Redevelopment Brampton, Canada

Product: Dri-Design Flat  
Architect: MJMA  
Photography: Shai Gil

# Dri-Design Flat

## Profile Options

---

Dri-Design Flat can be direct fixed or with a ventilated cavity. Dri-Design negates sealants, gaskets or butyl tape in the cassette joints, minimising dirty streaks and maintenance for the building owner.





# Dri-Design Tapered Profile Options

---

Dri-Design Tapered cassettes can be angled in any single direction with varying degrees of slope and depth, up to a maximum of 75mm. This freedom to design each specific cassette gives you an unlimited capacity to create a dynamic, unique surface on nearly any façade, without the need to modify the substrate or weather barrier.



**Tishomingo Health Clinic**  
Oklahoma, USA

Product: Dri-Design Tapered  
Architect: Childers Architect

# Dri-Design Shadow

## Profile Options

---

Dri-Design Shadow cassettes add depth and definition to any architectural design. Individual panels can be extended at varying depths to create texture or a dynamic variation in patterns, all while keeping the substrate and weather barrier in the same plane. Maximum shadow depth is 100mm.



Gova Meubelplezier  
Lier, Belgium

Product: Dri-Design Flat & Tapered  
Architect: Dieter Peeters  
Photography: Bert Demasure



# Dri-Design Perforated Profile Options

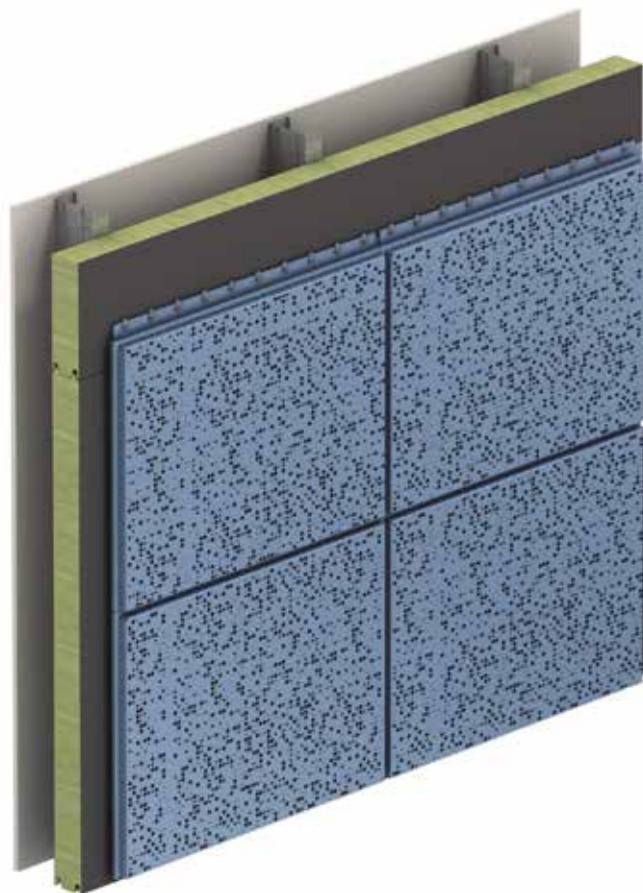
Perforations can have both practical and aesthetic uses. They can be used to allow passage of air and natural light, or to provide a visually striking façade bespoke to the building and its use.

Dependent on your projects requirements, the size and density of the perforations can be adjusted to meet your design requirements.



## Images

We have the capability to translate an image into a perforated façade pattern, allowing for unique and striking façade designs.



## VA Parking Garage Holland, Michigan, USA

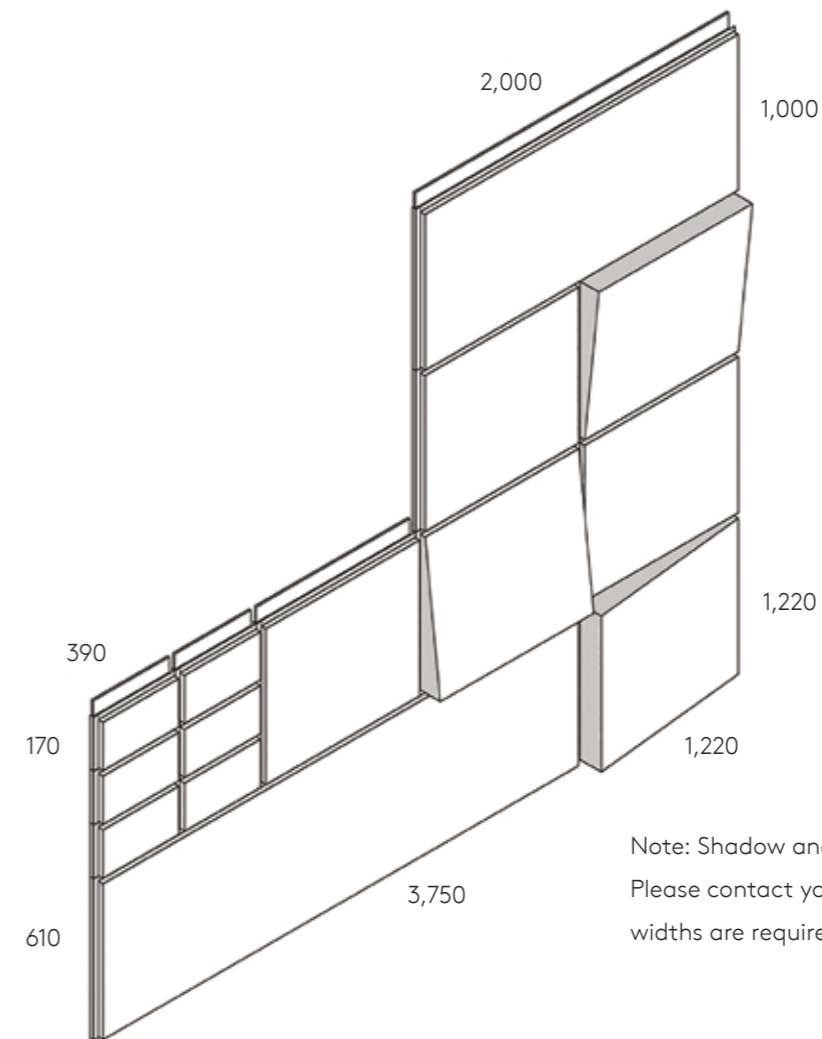
Product: Dri-Design Perforated  
Architect: Cunningham Group Architecture  
Photography: Mark Kempf



# Sizes & Materials

Below are the maximum standard face sizes for cassettes manufactured from aluminium. Please contact Kingspan Façades Technical Services for further information on other materials or to discuss your specific requirements.

Minimum permissible size is 390mm width and 170mm height.



Note: Shadow and Tapered profiles have limited widths. Please contact your Kingspan representative if large widths are required for these profiles.



Aluminium

Dri-Design is manufactured using aluminium.

The benefits of aluminium include:

- Cost-effectiveness
- Strong and durable
- Corrosion resistant
- 100% recyclable
- Flashings and fabrications are available in the same material for a complete solution

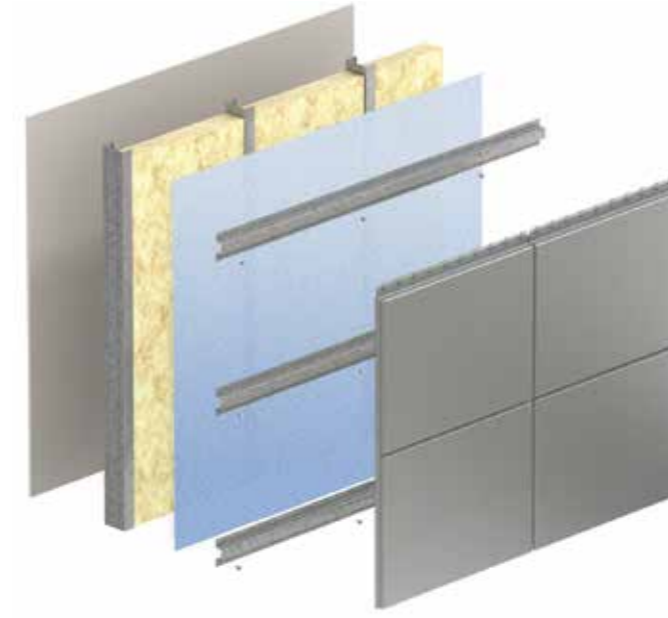
## Edith Cowan University (ECU) Sciences Building

Product: Dri-Design Flat and bespoke Hook-on Cassettes  
 Architect: Silver Thomas Hanley  
 Builder: Multiplex  
 Photography: Silvertone



# Dri-Design Substructures

Dri-Design can be installed on Karrier Panel, Eurobond Rainspan, or on top-hats using a traditional construction method or onto built-up sub-frame construction.



## Karrier Panel

Karrier Panel combines the aesthetic flexibility of rainscreen façades with the practical benefits of a composite panel - quick installation, excellent airtightness and high R-values.

1. R Values up to 9.82 ( $\text{m}^2\text{K}/\text{W}$ )
2. Thermal Efficiency
3. Exceptional Airtightness
4. Custom cranked and curved panels available
5. Lightweight and easy installation
6. Large-scale fire tested and assessed to AS 5113 and BS 8414-2 for different core materials and façade options. (Contact Kingspan's Technical Department for specification details)

## Eurobond Rainspan

Eurobond Rainspan is a fully tested and robust insulated panel that provides structural support for rainscreen systems. Its stone wool core provides 'built in' passive fire protection for large scale buildings.

1. R Values up to 5.45 ( $\text{m}^2\text{K}/\text{W}$ )
2. Stone Wool non-combustible core
3. Tested to AS1530.1
4. High acoustic performance
5. Exceptional Airtightness
6. Fire resistance level up to -/240/240

## Traditional Built-Up

Where traditional construction methods are adopted, Dri-Design is generally fixed to tophats over a weatherproof membrane. Rivets are used to allow the aluminum to expand and contract as needed.

When using this method we recommend consideration of:

1. Weather tightness
2. Thermal bridging and condensation
3. System durability
4. Sourcing and environmental impact

Product data sheets are available to download online. Please visit our website.

# Bespoke Façades

Bespoke façade solutions are available on a project-by-project basis. Contact our façades team for further information.



## Edith Cowan University (ECU) Sciences Building Perth, Australia

Products: Eurobond Rainspan substructure, Dri-Design Flat and Perforated cassettes, and Bespoke Perforated Hook-On Cassettes.

Architect: Silver Thomas Hanley  
 Builder: Multiplex  
 Photography: Silvertone



## Perth Museum Perth, Australia

Products: Karrier Panel & Bespoke Perforated Hook-on Cassettes

Architects: Hassell Studio & OMA  
 Photography: David Broadway




# Services

## Renovate or Reclad

Renovation offers property investors, owners and occupiers a cost-effective route to substantially improve the energy performance, aesthetics and asset value of existing buildings. In many cases it can make economic, as well as environmental sense, to modernise or upgrade a building rather than demolish and completely rebuild.

Our Commercial Team are experienced in advising and supporting recladding and renovation projects. We work with you to find a solution that improves the performance and the aesthetics of your existing buildings. Thus avoiding the expense and disruption associated with demolition and rebuild.

 Contact our Commercial Team to learn more.  
Phone: +61 (02) 8889 3000  
Email: [info@kingspanpanels.com.au](mailto:info@kingspanpanels.com.au)



## Installer Training

Professional installer training is available for all Kingspan Façade Systems. Attendees will learn about our products, including fixing systems, recommended mechanical lifting techniques as appropriate and a broad discussion about best practice.

At the end of the one day course you will have gained a thorough knowledge of the product and will be issued with a training ID Card showing that you have been trained to install it.

To find out more about Kingspan Façades installer training days, or to book your place on the next available course, please contact us at:  
Phone: +61 (02) 8889 3000  
Email: [FSE\\_KIP\\_AU@kingspan.com](mailto:FSE_KIP_AU@kingspan.com)



## Continuous Professional Development programme

Our seminar based CPDs can be arranged at your office premises in any state across Australia or online.

Visit our website to book a CPD or Dri-Design product presentation:  
[www.kingspanpanels.com.au/facades/services](http://www.kingspanpanels.com.au/facades/services)



## Specialist Fabrications

Our fabrications are manufactured to suit individual project needs, using state-of-the-art technology. We have the capability to manufacture lengths up to 6 metres as a standard in a variety of shapes across our fabrications range.





Dri-Design Flat

### Samples

We are able to offer a quick turnaround of boxed samples for the below products and can liaise with you for more bespoke requirements.

- Dri-Design Flat, Shadow and Tapered
- Eurobond Rainspan

Please send sample requests to our Marketing Department at: [AUsamples@kingspan.com](mailto:AUsamples@kingspan.com)



Dri-Design Tapered



Dri-Design Shadow

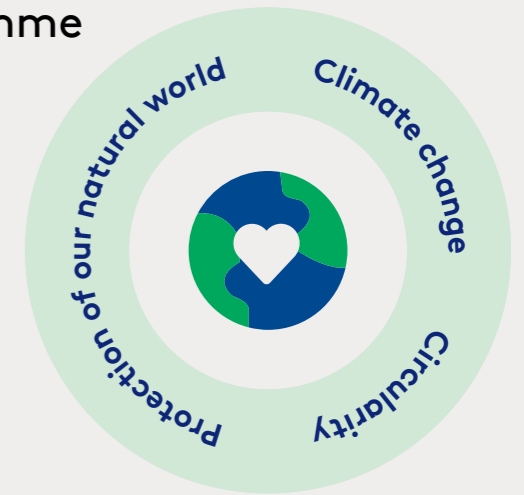
# WE ARE PLANET PASSIONATE

## Introducing Planet Passionate – our new global sustainability programme

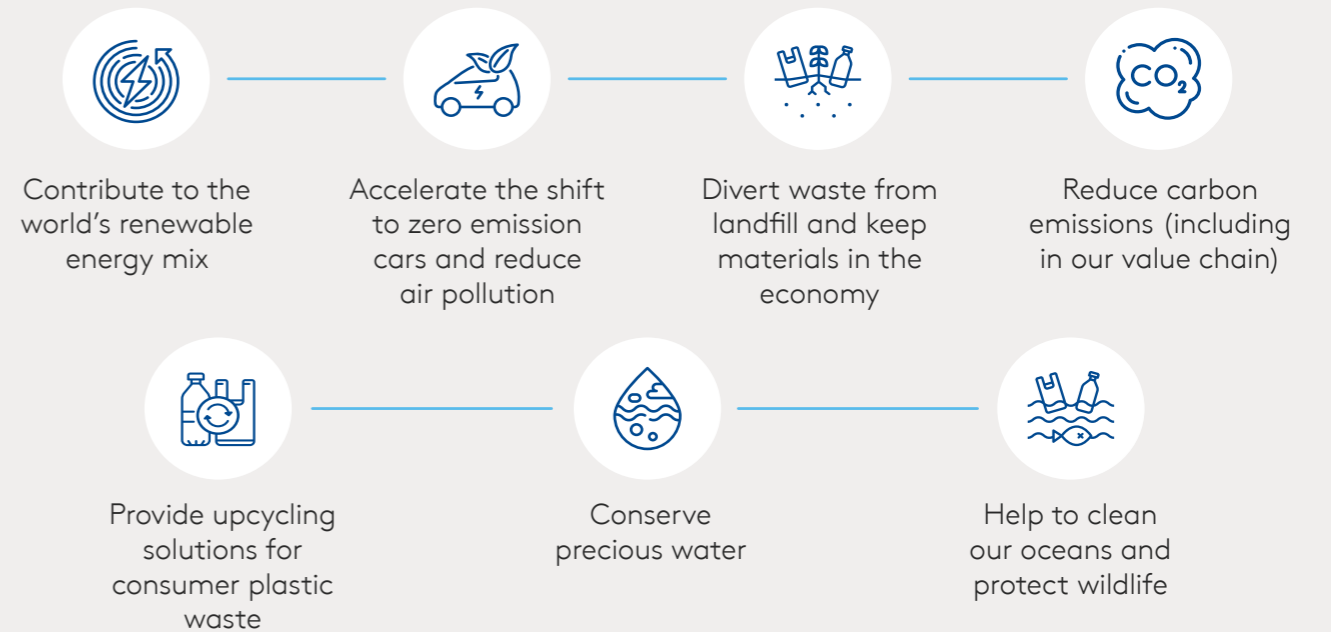
Planet Passionate is Kingspan’s ambitious 10-year global sustainability programme that aims to impact three big global issues:

- **Climate change**
- **Circularity**
- **Protection of our natural world**

By setting ourselves challenging targets in the areas of energy, carbon, circularity and water, we aim to make significant advances in the sustainability of both our business operations and our products.



### By being Planet Passionate in our operations we aim to:



### By being Planet Passionate our products will be:





---

# Contact Details

---

## Australia

### **Kingspan Insulated Panels Pty Ltd**

38 - 52 Dunheved Circuit

St Marys, NSW 2760

T: 1300 KINGSPAN (1300 546 477)

F: +61 (02) 8889 3099

E: [info@kingspanpanels.com.au](mailto:info@kingspanpanels.com.au)

[www.kingspanpanels.com.au](http://www.kingspanpanels.com.au)

